

To: Outback S2™ Owners
From: Technical Support, Ground Ag
Date: June 3, 2009
Subject: Application ver. 6.5 Upgrade Loading Instructions
Reference #: P200910

Product Affected: Outback S2

Scope: This service bulletin provides proper loading procedures for updating the Application Software to version 6.5 on an Outback S2.

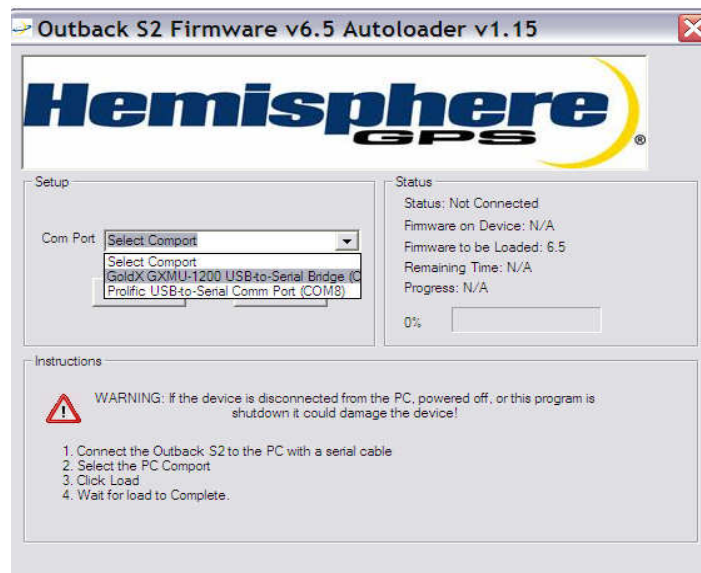
Description of Changes: This version of software includes multiple enhancements and fixes for the Outback S2. This and future versions will be located at the Download Center on our website at www.outbackguidance.com.

The main fixes in Version 6.5 are:

- Swath Offset is now retained after a reboot
- Communication isn't lost between the Outback S2 and Outback 360™
- Guidance isn't lost after a large number of passes

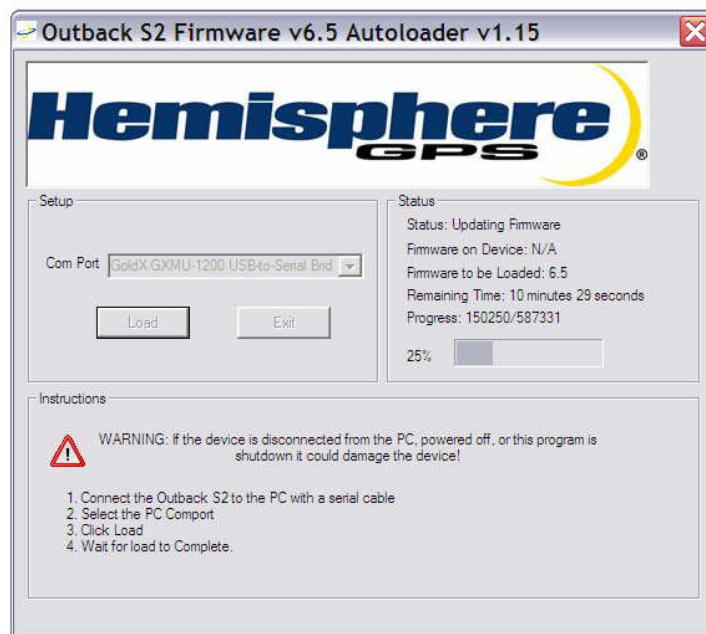
Instructions:

- Step 1** Copy the "AutoloaderS2_V6_5" to your computer.
- Step 2** Power up the Outback S2, and connect the Outback S2 to your computer with a serial cable.
- Step 3** Open the Autoloader file and select your serial port from the "Com Port" list.



Step 4 Select "Load".

- Step 5** Wait for the load to complete. The status box displays percent of the load complete and time remaining. Estimated install time is 11- 12 minutes.



- Step 6** The Outback S2 will automatically reboot after loading. Ensure the load has taken effect by checking the software version on the console.
- Step 7** Before beginning a new job, select "Reset Defaults" from the service menu. Refer to page 20 of the Outback S2 User Guide for instructions.